

LIFTING



PONSA[®]

QUALITY WEBBINGS since 1828

Since 1828



in the world



ROMANIA



Barcelona - SPAIN - Headquarter



SWEDEN



TRINIDAD & TOBAGO

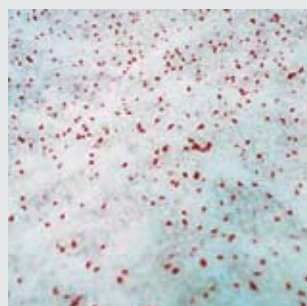


CHINA

Quality



We are **manufacturers** with ISO 9001:2008 certification. We guarantee the quality of our webbings and the whole control of production process, transport and after sales.





slings

All our products fulfil the specific standards. They are under strict quality controls and therefore our customers can have total **confidence** and **rely on** them.



TECHNICAL DETAILS

ABOUT THE USE OF SLINGS

Width	Straight lift	Choked lift	Basket hitch	$\beta \leq 45^\circ$ Basket hitch	$\beta \leq 60^\circ$ Basket hitch
30 mm	1.000	800	2.000	1.400	1.000
60 mm	2.000	1.600	4.000	2.800	2.000
90 mm	3.000	2.400	6.000	4.200	3.000
120 mm	4.000	3.200	8.000	5.600	4.000
150 mm	5.000	4.000	10.000	7.000	5.000
180 mm	6.000	4.800	12.000	8.400	6.000
240 mm	8.000	6.400	16.000	11.200	8.000
300 mm	10.000	8.000	20.000	14.000	10.000



FLAT SLING

1 tn - 3 tn



PATENTED

1 m - 10 m.*
PES 30 mm, 60 mm, 90 mm.

4 tn - 10 tn

2 m - 8 m.*
PES 120 mm, 150 mm, 180 mm, 240 mm, 300 mm.



1 **More double abrasion resistance.** Due to thin anti-abrasion cover cap.

2 **More double in resistance to lateral cut.** Introducing technical advances of warpan single-cell composition in lateral threads of high tenacity.

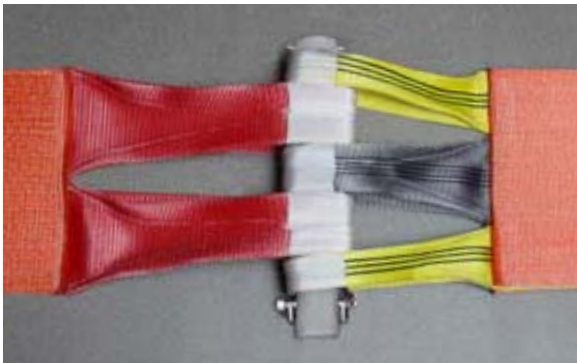


LAST DOUBLE

*Other lengths on request.

SPECIAL / HEAVY WEIGHT

Till 40 tn. Custom made slings.

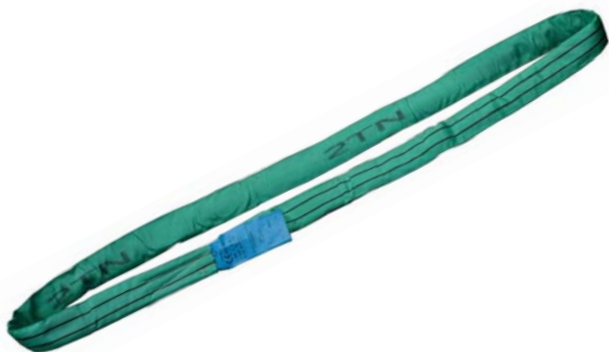


Detail of removable sling eyes.

ROUND SLING

1 tn - 10 tn endless

1 m - 10 m.
Manufactured in **high tenacity** polyester.



1 tn - 4 tn with soft eyes

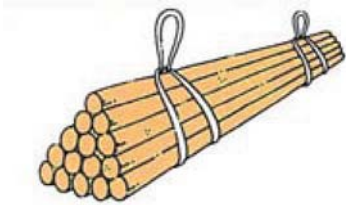
2 m - 6 m.



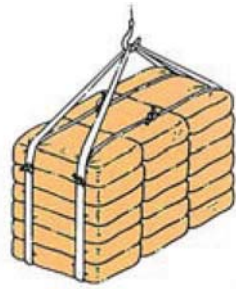
ONE WAY SLING

Different slings for different purposes.

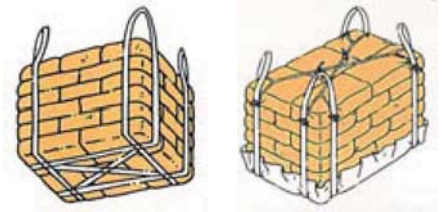
ring sling



panier sling



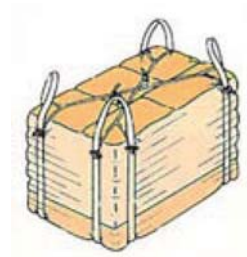
clover leaf



sling bag



plastic covered



HOW TO READ THE LABEL

Material of the sling. For Polyester (PES) the label is blue, for Polypropylene (PP) brown and for Polyamide (PA) green

Under which norm the sling is manufactured

Certification ISO 9001:2008

Safety Factor

Barcode for traceability

W.L.L. Working Load Limit in straight lift

Model sling: **ROUND SLING**

Anagram CE norm: **CE**

Length nominal: **L 6 m**

Manufacturing date: **Prod. : 11 / 2011**

Name manufacturer or distributor: **PONSA**
 TL +34 938773500
 www.ponsa.com

Working Load Limit depending on the position of the sling:

10 t	20 t	8 t
14 t	10 t	

TIPS for proper use

Before use

1-. Check the material that you want to lift and the position how you want to lift it.



2-. Check the label of the sling (W.L.L.) related to the position of lifting.



3-. A sling with a small damage needs to be destroyed immediately.

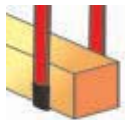


4-. Use only correct identified slings (including certificate).



During the use of the sling

5-. Use protection if the lifted material has sharp edges which can damage the sling.



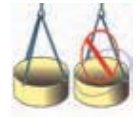
6-. Do not twist or put knots in the sling.



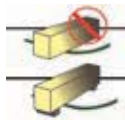
7-. Do not tear the sling over the floor.



8-. The lifted material needs to be always in balance.



9-. Place the slings without a possible friction.



10-. Nobody and nothing should be under the lifted material.



11-. Move the lifted material in the correct way.



After use

12-. Do not store: on the floor, under direct sun light, under UV light, near heat sources or chemical products.



PONSA[®]

since 1828

INDUSTRIAS PONSA, S.A.

Polígono Industrial "Els Dolors" - C/ Sallent, 64-72 · 08243 MANRESA (Barcelona) Spain
Tel. +34 93 877 35 00 · Fax +34 93 877 08 55 | www.ponsa.com · info@ponsa.com